

2006-8/8/8

ORDINANCE 2006-08

An Ordinance for the adoption of SmartCode for the Town of Elmore, Alabama

**NOW, THEREFORE BE IT ORDAINED BY THE TOWN COUNCIL OF
ELMORE, ALABAMA, AS FOLLOWS:**

Section 1. The Council of the Town of Elmore hereby adopts SmartCode as an alternative to zoning for the Town of Elmore.

Section 2. The SmartCode is to be an overlay that is provided in all sections of the Town of Elmore as an alternate to zoning.

Section 3. There will be no commingling of SmartCode and Zoning for the convenience of the individual builder, contractor, or developer. A developer, contractor, or individual builder shall choose to follow the guidelines and sections and/or articles of either SmartCode or Zoning but not both.

APPROVED AND ADOPTED THIS THE 13 DAY OF June, 2006

Mark Carter
Mayor

ATTEST:

Mark Carter
Clerk

Place #1

John Wilson
Place #2

Place #3

John Lawrence
Place #4

Joe E. Sullivan
Place #5

2006 - 81819

STATE OF ALABAMA

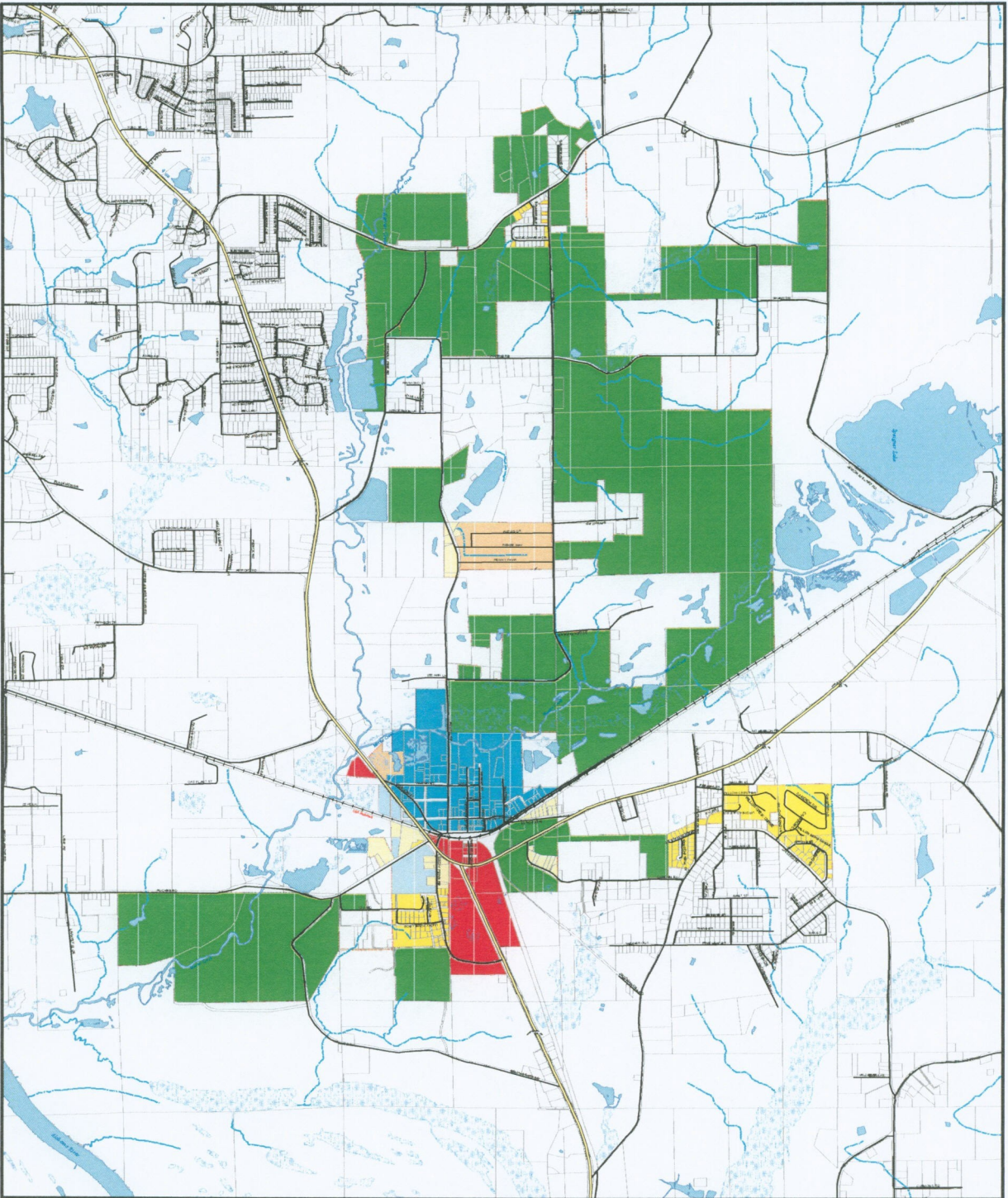
ELMORE COUNTY

TOWN OF ELMORE
AFFIDAVIT FOR POSTING

I, Gwen Carter, hereby certify that I am the Town Clerk of the Town of Elmore, that I have in my possession the books and records of such municipality, including the minute book in which are recorded the minutes of the council thereof, and that the forgoing is a true and correct copy of an ordinance of such Council which was duly and legally adopted by it on the 12th day of June, 2006, and that said ordinance has been recorded in the ordinance book kept for that purpose and was published by posting on three public places within the limits of said municipality on the 13th day of June, 2006.

IN WITNESS THEREOF, I hereinto affix my signature as Clerk of such municipality, and the seal thereof, on this the 13th day of June, 2006.

Gwen Carter
Gwen Carter, Town Clerk



Zoning Map Town of Elmore

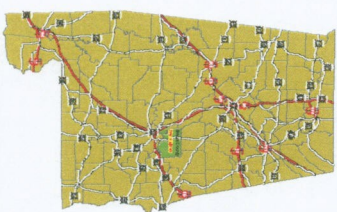


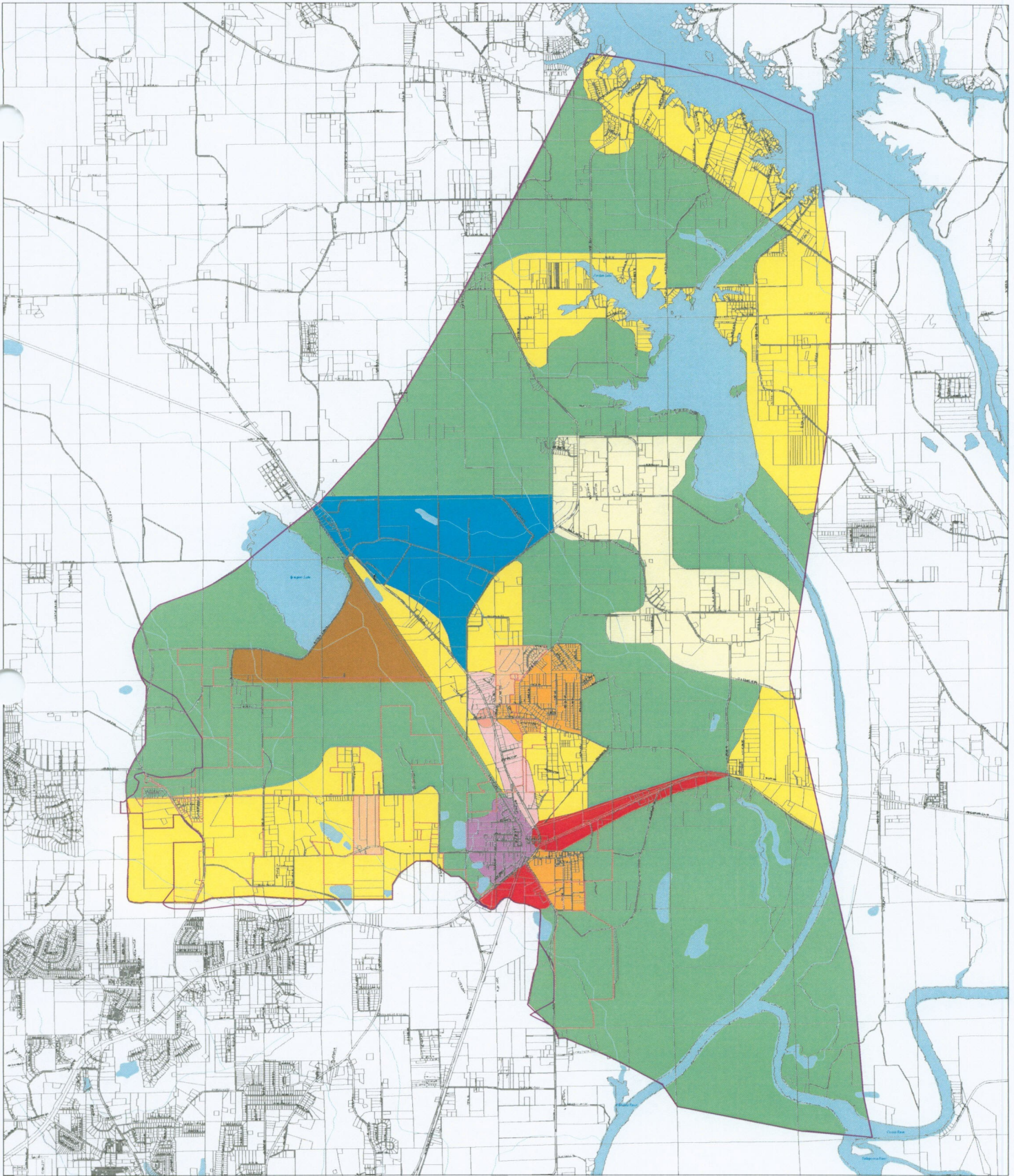
Legend

- Elmore Zones**
- | |
|---|
| RF: Residential, Forestry & Recreational District |
| RE: Residential Estate District |
| RI: Residential District |
| R2: Residential District |
| RDH: Two- to Four-Unit Attached Housing |
| HR: Historical Town Center District |
| GB: General Business District |
| OU: Office & Institutional District |
| HI: Industrial District |
| SC: Smart Growth Overlay District |
| PD: Planned Development District |
| AR: Airport Hazard Overlay District |



August 2006



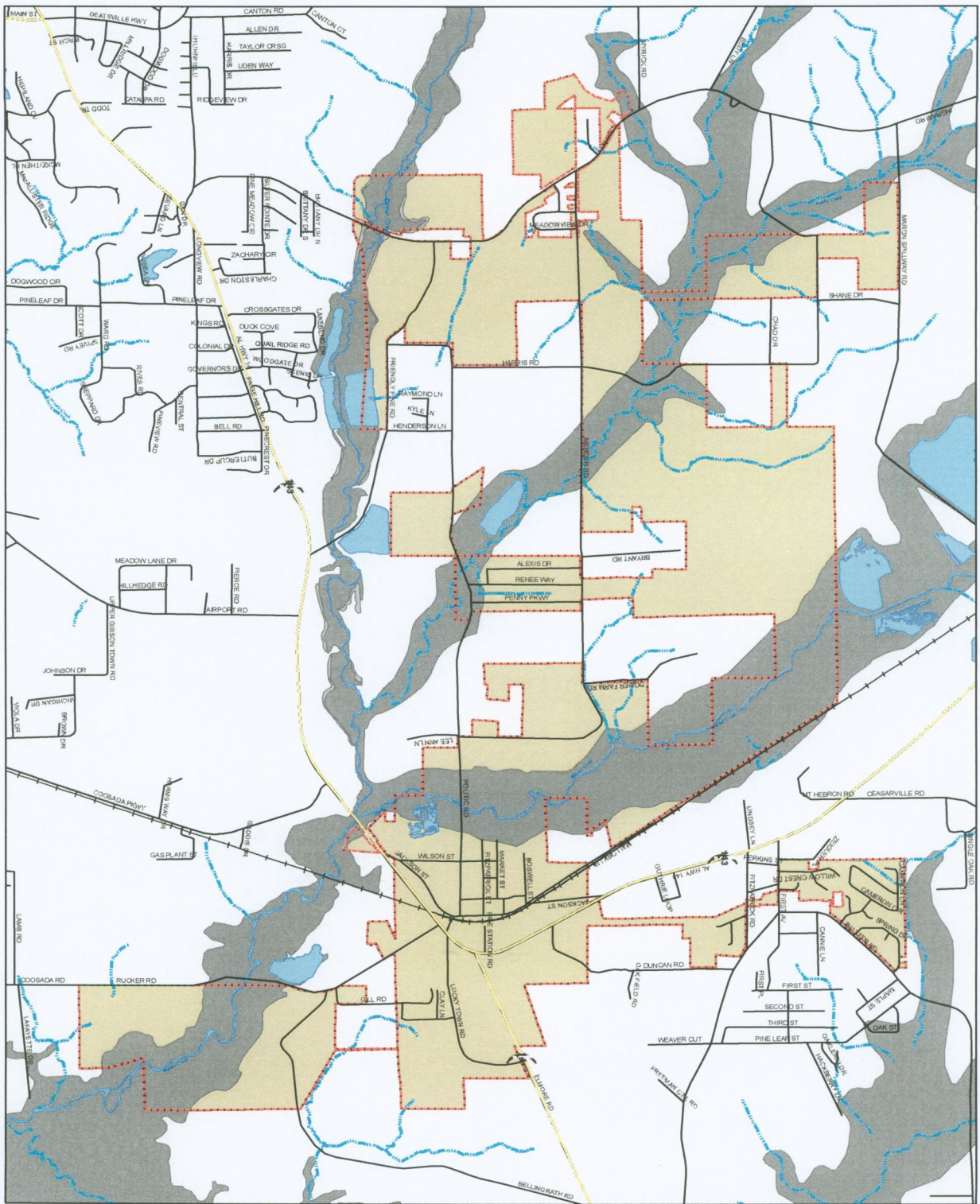


- Legend**
- Elmore Planning Jurisdiction
 - Town of Elmore
 - Elmore Future Land Use
 - Low Density Residential
 - Low/Medium Density Residential
 - Medium High Residential
 - Residential Medium Density
 - General Commercial
 - Neighbourhood Community
 - Small Town Mix
 - Industrial
 - Downtown Historical
 - Agriculture/Forestry

Town of Elmore Future Land Use

1 0 1 Miles

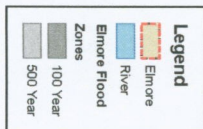




Elmore Flood Map

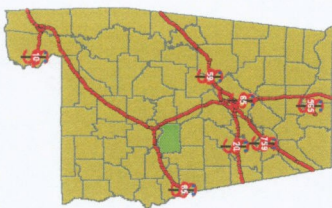


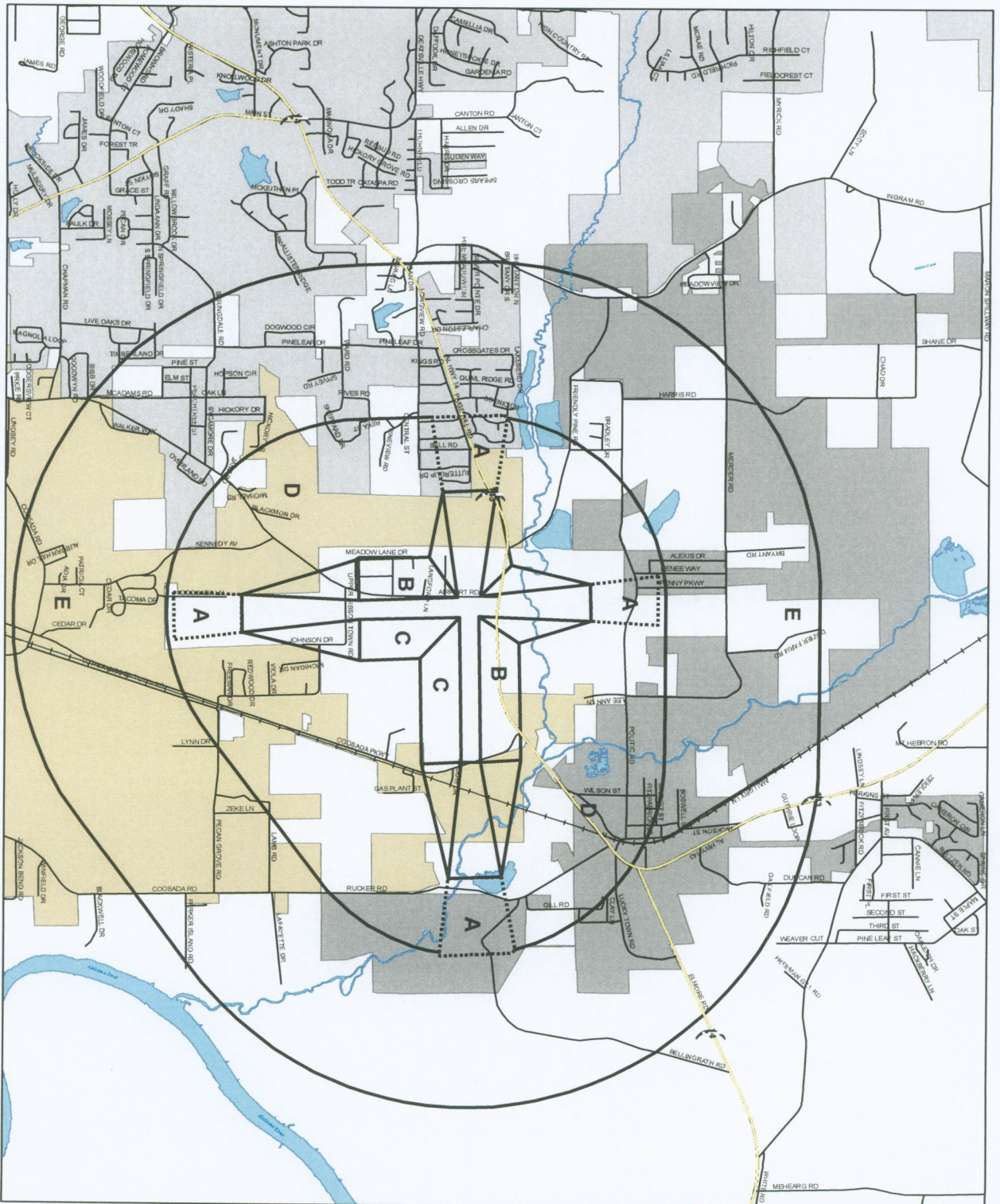
2,000 0 2,000
1 inch equals 2,000 feet



MARCH 2006

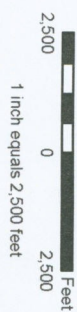
Note: Flood Information Derived From FIRM
Community Panel Number 010406 0090 B
010406 0095 C





Airport Overlay Map

Wetumpka
Municipal Airport
Elmore County,
Alabama



- Legend**
- Municipalities
 - Coosada
 - Elmore
 - Millbrook

- LEGEND**
- A Approach Surface
 - B Transitional Surface
 - C Primary Surface
 - D Horizontal Surface
 - E Critical Surface

MARCH 2006

Note: Airport Information Derived From Baige Waggoner Summer and Cannon, Inc.
File No. 17077 - 33

